

**Attachment to  
Conserve Southwest Utah's Comments on the  
Long Valley Road Extension Right-of-Way Environmental Assessment  
DOI-BLM-UT-C030-2020-0004-EA**

List 1: Red Cliffs Coalition Member Organizations

Map 1: Geographic Context

Map 2: Detail of the Proposed ROW Extending Long Valley Road to the Planned Interchange at MP 11

Photo 1: Looking north at Milepost 13

Photo 2: Looking south at Milepost 13

Photo 3: Looking north near Milepost 14

Photo 4: Looking south near Milepost 14

Photo 5: Red Man pictograph near Fort Pierce

## List 1: Red Cliffs Coalition Member Organizations, in alphabetical order

Advocates for the West  
Basin and Range Watch  
Back Country Horsemen of America - Utah  
Center for Biological Diversity  
Conservation Lands Foundation  
Conserve Southwest Utah  
Defenders of Wildlife  
Desert Tortoise Council  
Friends of the Inyo  
Friends of Animals  
Great Old Broads for Wilderness - Utah  
Sierra Club - Utah  
Southern Utah Wilderness Alliance  
The Wilderness Society  
Utah Audubon Council  
Utah Native Plant Society  
Western Watersheds Project  
WildEarth Guardians

# Map 1: Geographic Context



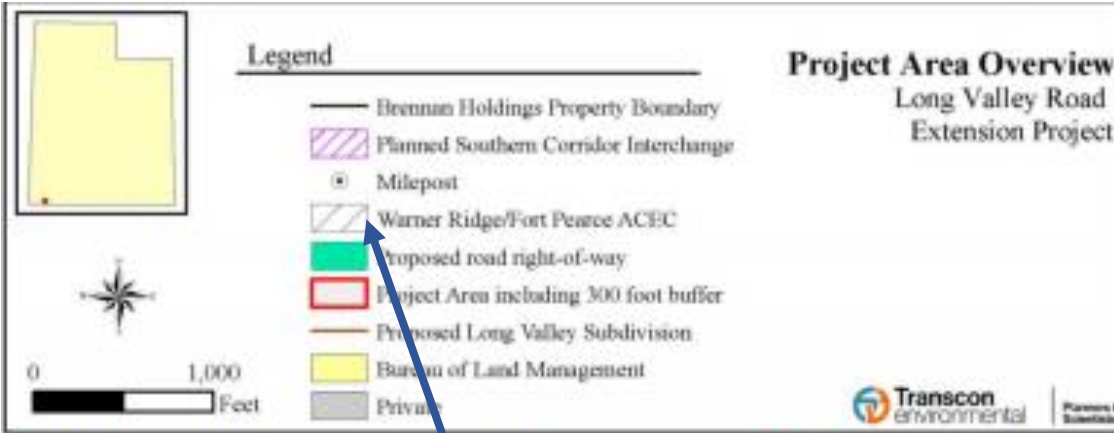
Approximate location of MP 13

Approximate location of the planned Brennan subdivision, The Trails at Long Valley

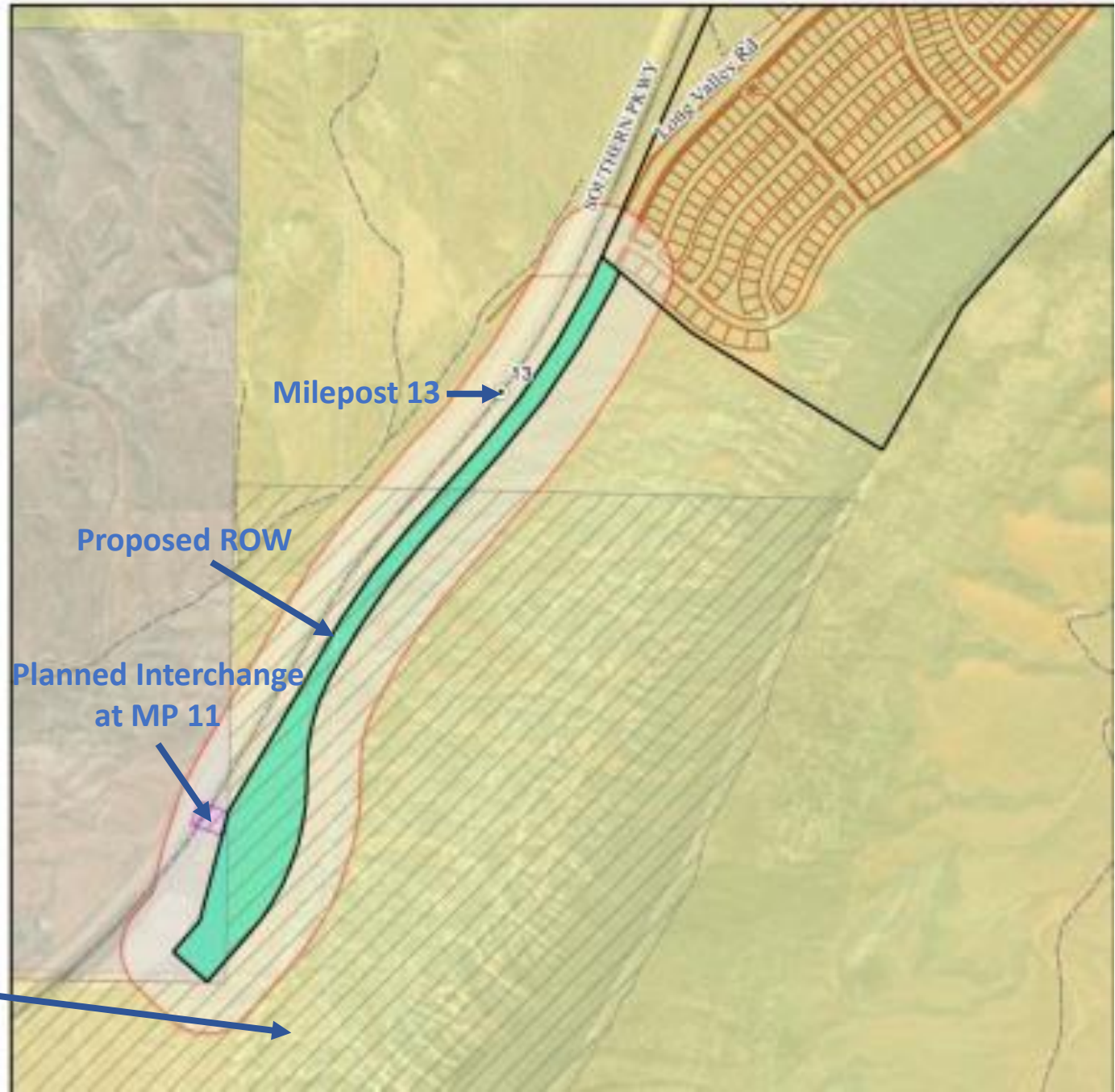
Approximate location of the planned interchange at MP 11 and E3650S

Approximate location of proposed ROW for the Long Valley Rd Extension, connecting the Brennan subdivision to a planned interchange at MP 11 and 3650S

**Map 2: Detail of the Proposed ROW  
Extending Long Valley Road  
to the Planned Interchange at MP 11  
(based on EA Figure 1)**



**Figure 1.** Project area overview map. Depicts the project area including the proposed ROW and buffer area, the Southern Parkway, and the planned Trails at Long Valley subdivision



# Map 3: Alternative Intersection at MP 13

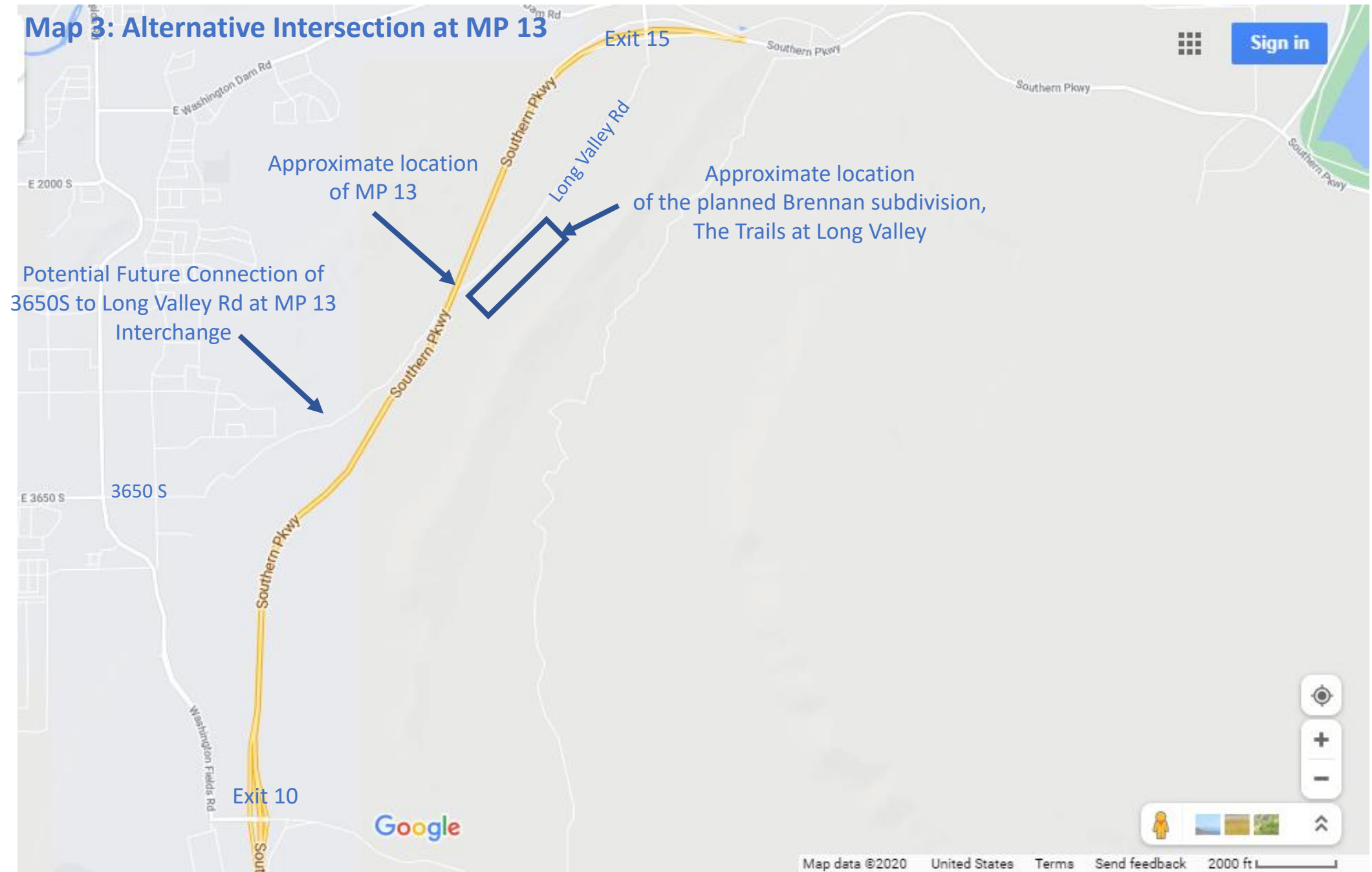


Photo 1, looking north at Milepost 13



Photo 2, looking south at Milepost 13



Photo 3, looking north near Milepost 14





Photo 4, looking south near Milepost 14



Photo 5, Red Man pictograph near Fort Pierce

42WS2131 2018-12-04 Photo 5: Panel 2, E3 Red Man

