

“Non-federal lands remain within the boundaries of the Red Cliffs NCA that could be acquired from willing sellers or land administrators.”

LANDS AND REALTY

in the PUP as open to motorized use by the public. Six of the 11 designated roads traverse public lands of the NCA: Red Hills Parkway (formerly Turtle Road and Skyline Drive), Cottonwood Road, Turkey Farm Road, Babylon Road, Toquerville Cutoff, and Sand Cove Spur. Of the designated roads, only the Red Hills Parkway and the southern portion of Cottonwood Road are paved. The City of St. George manages use on Red Hills Parkway and prohibits the OHV travel on that road. The Red Cliffs Recreation Area Road, which was not included in the PUP, is also paved and is authorized for motorized vehicle travel, although OHVs are prohibited from traveling within the developed campground and day use area.

All other roads within the NCA are closed to motorized vehicle travel by the public, although many are open for administrative use by municipalities and power companies to access electrical transmission lines and water utilities.

Detailed information on the non-motorized trail network can be found in the Recreation section above. As described for the Beaver Dam Wash NCA, BLM will identify OHV area designations for Red Cliffs NCA in this document and is currently developing a TMP for Washington County public lands that will identify alternatives for specific route designations.

3.42 LANDS AND REALTY

3.42.1 Land Tenure Adjustments

Since 1996, the SGFO has assisted Washington County in the furtherance of its HCP commitments through land tenure adjustments designed to acquire private land inholdings into federal ownership in the. During the 17-year period between 1996 and 2013, a total of 6,374 acres were acquired, primarily by land exchange, with private inholdings being exchanged at fair market value by willing owners for public lands elsewhere in Washington County. Other private inholdings were acquired through

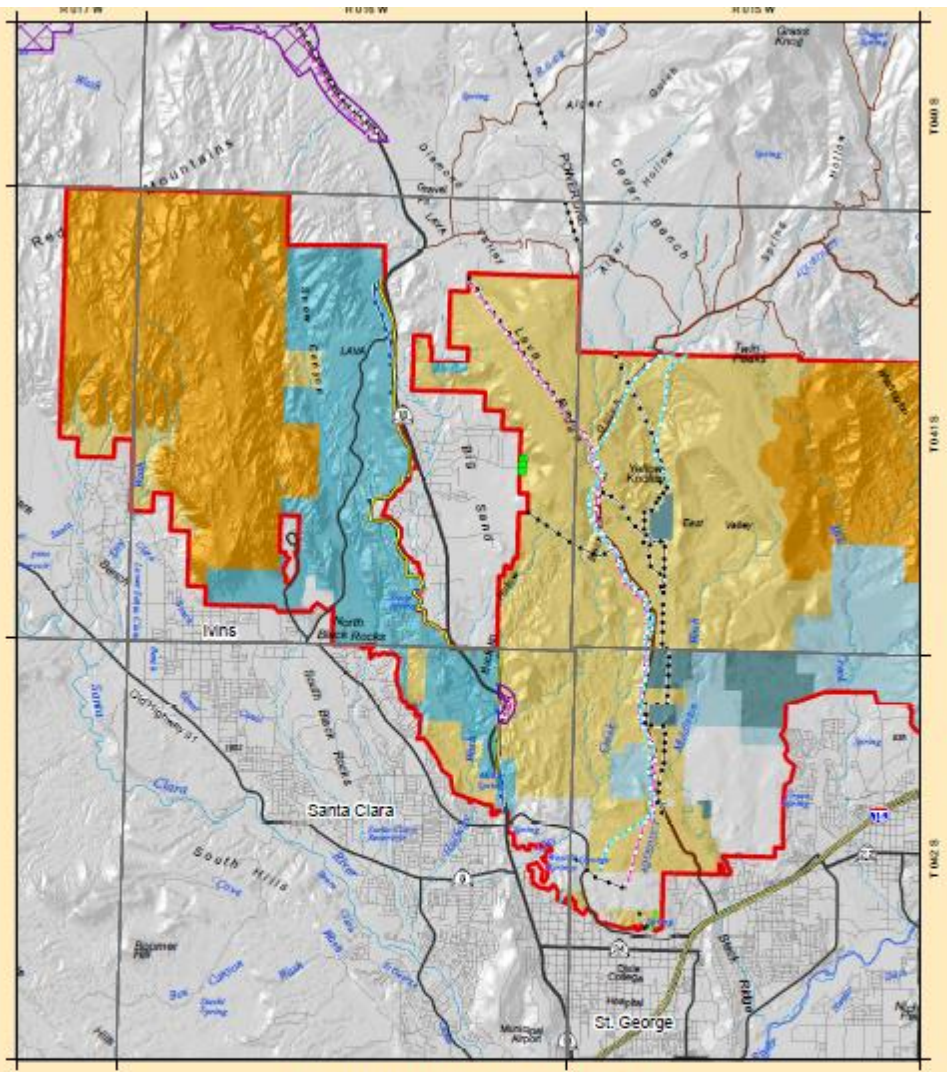
donations and direct purchases with Land and Water Conservation Funds. Although BLM has been the primary agency to acquire lands, Utah State Parks and UDWR have also actively pursued acquisitions of private inholdings in the Reserve, using federal funds provided under Section 6 of the ESA.

Non-federal lands remain within the boundaries of the NCA that could be acquired from willing sellers or land administrators. Certain tracts are encumbered with previous developments such as large retention basins, a large water tank, and a former municipal landfill which has been remediated and capped.

3.42.2 Linear ROWs and Site Type Leases

In 1999, the SGFO RMP designated all public lands in today's NCA as a ROW Avoidance area. This designation was intended to further the goals and objectives of Washington County's HCP, by protecting habitat for Mojave desert tortoise and other at-risk species from impacts and loss to the construction of new power transmission lines, water lines, communication sites or other facilities. Since wilderness designation in 2009, the Cottonwood Canyon and Red Mountain Wilderness areas have been managed as ROW Exclusion areas. Since 1999, no new ROWs have been granted in the Avoidance area, although upgrades to an existing Rocky Mountain power transmission line and associated substation were authorized. Refer to [Maps 3-61](#), [Map 3-62](#), and [Map 3-63](#) for ROWs and Avoidance/Exclusion areas.

Management direction for the ROW Avoidance areas stated that new ROWs would only be granted in these areas when feasible alternative routes or designated corridors were not available. Measures to reduce resource impacts would be applied on a site-specific basis, should new ROWs be granted (BLM 1999). Management direction for the



Right-of-Ways (West) - Red Cliffs NCA

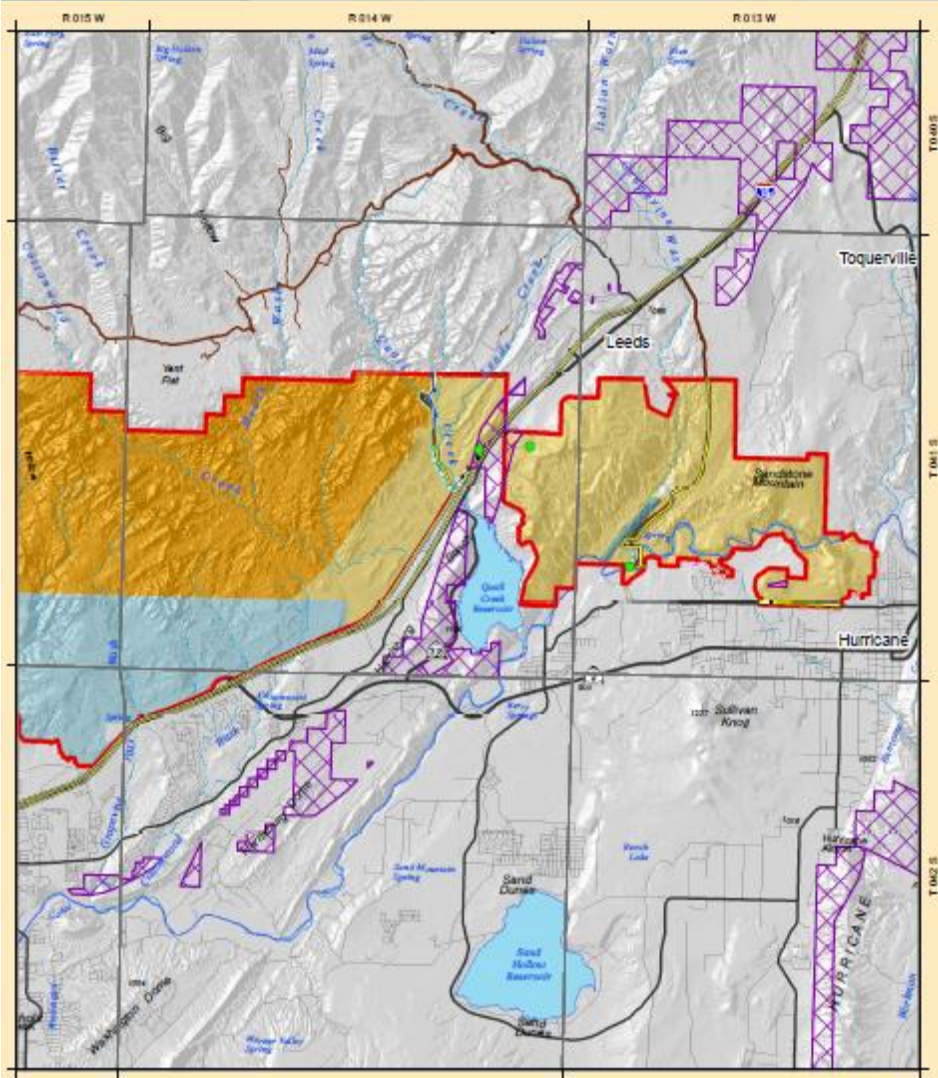
- Right-of-Way
- National Conservation Area Boundary
- BLM Wilderness Area
- Bureau of Land Management
- State Parks and Recreation
- State Wildlife Reserve/Management Area
- Fiber Optic Line
- Natural Gas Pipeline
- Powerline
- Road
- Telephone Line
- Water Pipeline
- Other
- ▭ Utility Corridor



This product may not meet BLM standards for accuracy and content. It represents an approximation and should not be used for any purpose not intended by the BLM. No warranty is made by the BLM for use of the data for purposes not intended by the BLM. Note: Decisions in this document only apply to BLM lands.

0 0.5 1 2 Miles
0 0.5 1 2 Kilometers





Right-of-Ways (East) - Red Cliffs NCA

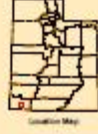
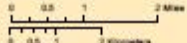
- Right-of-Way
- National Conservation Area Boundary
- Right-of-Way (line or area by type)
- BLM Wilderness Area
- Fiber Optic Line
- Bureau of Land Management
- Natural Gas Pipeline
- State
- Powerline
- State Parks and Recreation
- Road
- State Wildlife Reserve/Management Area
- Telephone Line
- Water Pipeline
- Other
- Utility Corridor

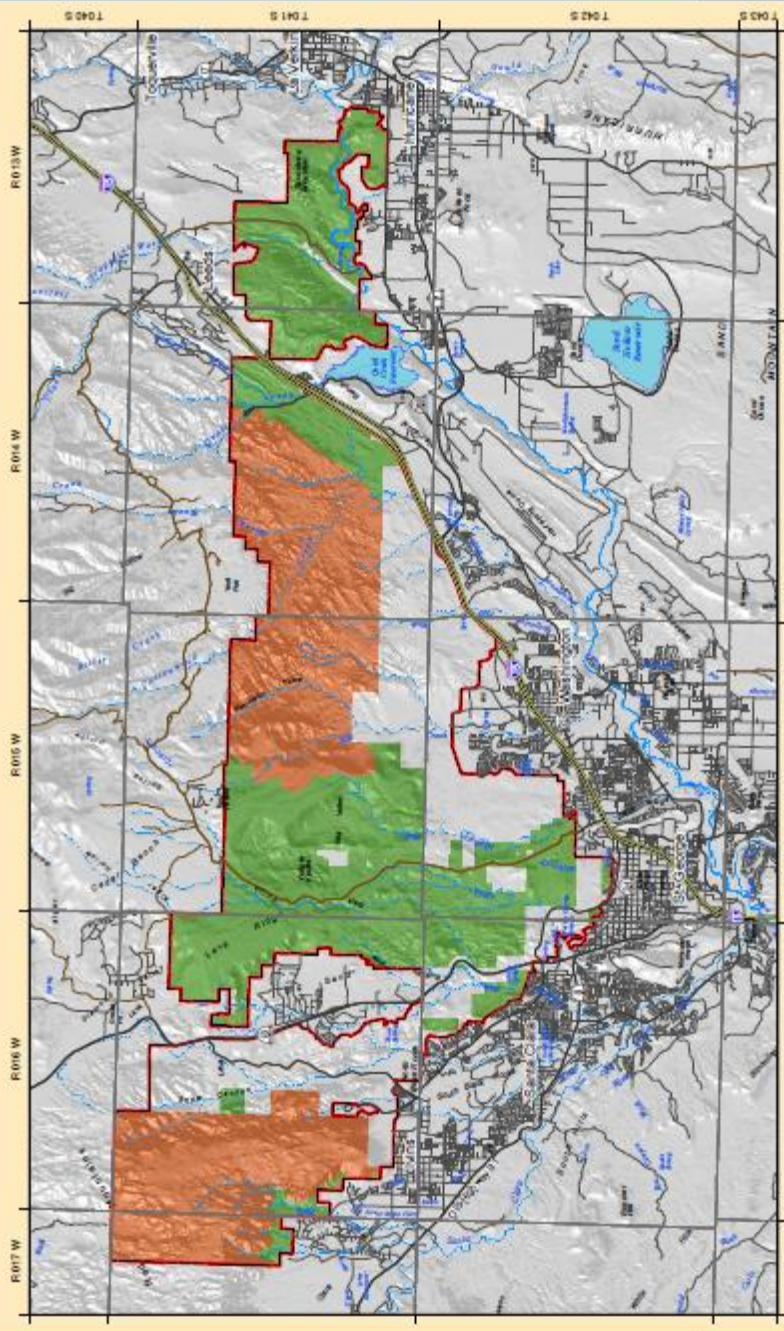


Produced by BLM
St. George Field Office 008



The product may not meet BLM standards for accuracy and content. Different data sources and input scales may cause some misalignment of data layers.
No warranty is made by the BLM for use of the data for purposes not intended by the BLM.
Note: Decisions in this document only apply to BLM lands.





Right-of-Way Avoidance and Exclusion Areas - Red Cliffs NCA

- RCWA Avoidance/Exclusion
- Avoidance
- Exclusion
- National Conservation Area Boundary



This map was prepared for the Nevada Department of Transportation (NDOT) by the Nevada Department of Transportation (NDOT) as part of the Nevada Department of Transportation (NDOT) project. The map shows the Right-of-Way Avoidance and Exclusion Areas for the Red Cliffs National Conservation Area. The map is based on the Nevada Department of Transportation (NDOT) data and is not intended to be used for any other purpose.



ROW Exclusion areas stated that new ROWs would only be granted in these areas when required by law or federal court action (BLM 1999).

The 1999 SGFO RMP designated two utility corridors that cross the NCA. One of these followed State Route 18 from St. George to Veyo, with the width of the corridor identified as the "currently fenced road right-of-way" (BLM 1999). The second designated corridor was discontinuous and irregularly shaped to include all of the public lands along the I-15 corridor, from Ash Creek Reservoir south to Harrisburg Junction. A portion of this corridor crosses the NCA near White Reef and the Harrisburg Bench.

Prior to 1999, a number of linear and site type ROWs had been granted by BLM across public lands that are today within the Red Cliffs NCA. Table 3-47 provides additional information about these ROWs and the purposes for which they were granted.

3.42.3 Other Land Use Authorizations

Commercial film permits comprise the majority of the requested land use authorizations in the NCA. Over the past 10 years approximately 2-3 applications per year for filming permits have been received for the Babylon area of the NCA. Film permits in the NCA are subject to

Table 3-47 Existing ROWs in the Red Cliffs NCA

ROW Type	Company	Number	Length (Feet)	Width (Feet)	Approximate Total Acres
Fiber Optic Line	Qwest	UTU-79729	3,000	10	0.69
Gas Pipeline	Questar	UTU-67785	3,000	50	3.44
Fiber Optic Line	Charter/Baha	UTU-80882	58,266	30	40.13
Power Line	PacifiCorp	UTU-71709	58,266	50	66.88
Power Line	UAMPS	UTU-65460	41,500	100	95.27
Power Line	PacifiCorp	UTU-13694	41,500	50	47.64
Water Pipeline	City of St. George	UTSL-034813	87,120	20	40
Power Line	City of St. George	UTU-62302	45,580	20	20.93
Power Line	PacifiCorp	UTU-43908	7,174	20	3.3
Road	Virgin River Land Preservation	UTU-65437	14,837	36	12.26
Water Pipeline	Virgin River Land Preservation	UTU-65446	1,320	10	0.3
Stream Gage	USGS	UTU-85366	5	5	0.0006
Power Line	Hurricane City	UTU-87524	5,276.1	10	1.2
Road	Hurricane City	UTU-85627	6,150	44	6.2
Water Pipeline	WCWCD	UTU-51374	6,150	50	7.06
Power Line	PacifiCorp	UTU-68896	1,697.7	25	0.97
Weather Gage	BLM	UTU-87847	24	24	0.013
Weather Gage	Nat. Weather Service	UTU-87848	24	24	0.013
Water Pipeline	Sunbelt	UTU-55662	100	10	0.023
Underground phone	Qwest	UTU-68595	2,568	10	0.59
Waterline reservation (Red Cliffs Recreation Area)	BLM	UTU-63291	4,864	24	2.68
Access road reservation (Red Cliffs Recreation Area)	BLM	UTU-46814	N/A	35	N/A
Underground phone	Qwest	UTU-47612	14,080	10	3.23
Gas Pipeline	Questar	UTU-67785	14,133	50	16.22
Highway 18	Fed. Highways	UTSL-062805	3,000	400	27.55

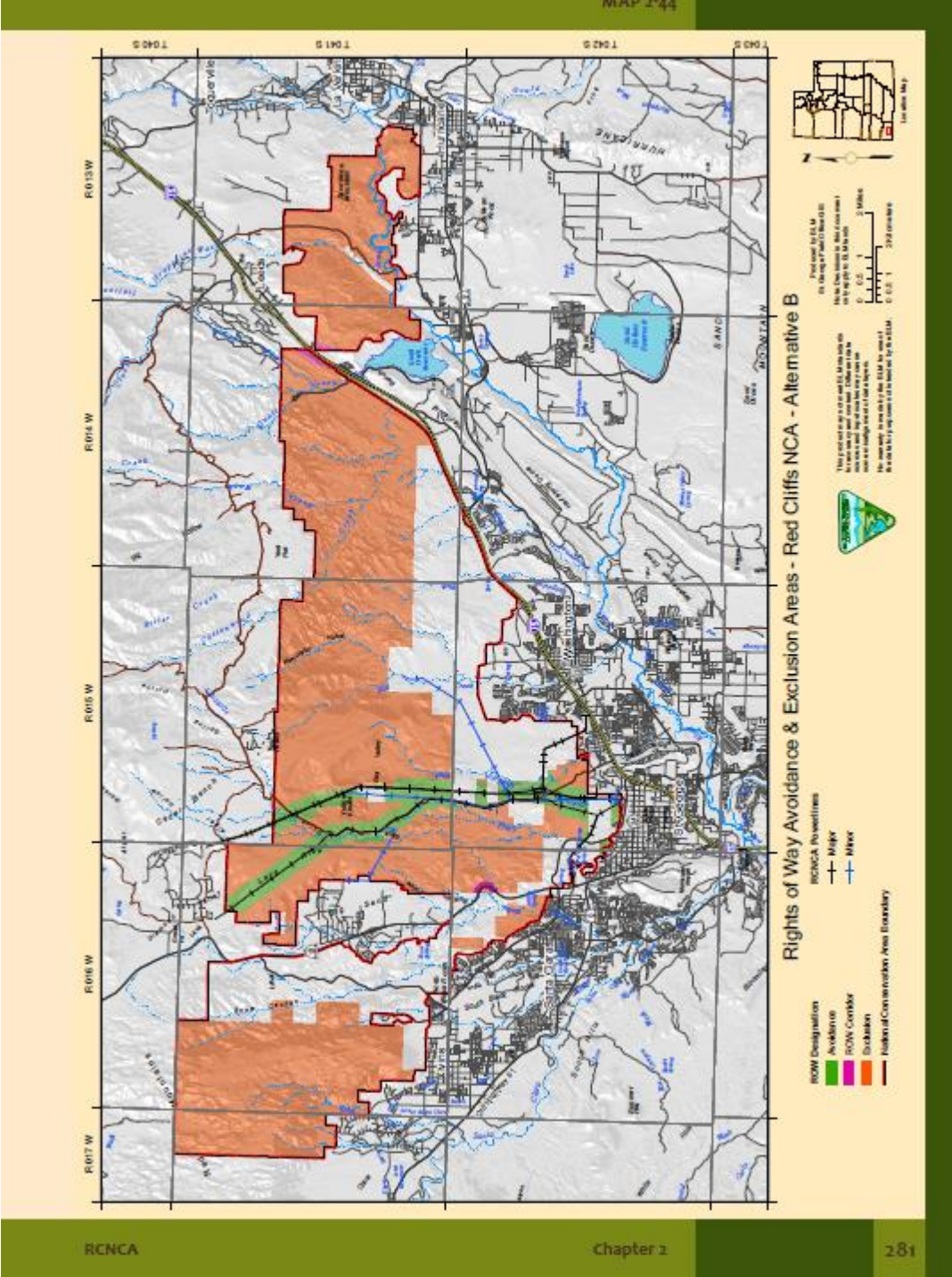


Table 2-68 Lands and Realty

Alternative A (No Action)	Alternative B	Alternative C	Alternative D
<p>opportunities, protecting floodplains, riparian areas, wildlife habitat, cultural sites, and wilderness, and meeting the mutually agreed upon objectives of local, state, and federal plans or programs. Although most acquisitions will occur through exchange, they may also be made through purchase, donation, or conservation easement.</p> <p>Over the life of the Plan, it is expected that BLM may acquire up to 18,000 acres of land within Washington County. Nearly all of these acres will result from BLM fulfilling its commitment to acquire available state and private lands within the Washington County Habitat Conservation Plan (HCP) Reserve and to fulfill existing statewide exchange agreements with the Utah School and Institutional Trust Land Administration to remove trust inholdings from within federally reserved areas.</p>	<p>b) Enhance public recreation experiences and benefits;</p> <p>c) Provide additional access to other public lands.</p>		
<p><i>Linear ROWs:</i></p>			
<p>Avoidance areas: Washington County HCP Reserve. (SGFO RMP Table 2-3)</p> <p>Avoidance area: 24,686 acres</p> <p>Exclusion area: 19,989 acres (Designated Wilderness)</p> <p>Designated ROW Corridor: 183 acres (State Route 18 and I-15, SGFO RMP Table 2-2 and Map 2.5)</p> <p>(Map 2-43)</p> <p>New ROWs will be granted in Avoidance areas only when feasible alternative routes or designated corridors are not available.</p> <p>New ROWs will be granted in Exclusion areas only when required by law or federal court action.</p>	<p>Designate ROW Avoidance and Exclusion areas, including Designated Corridors, as follows (Map 2-44):</p> <p>Avoidance area: 3,652 acres</p> <p>Exclusion area: 41,023 acres</p> <p>Designated ROW Corridor: 183 acres (State Route 18 and I-15)</p> <p>Do not designate new corridors for linear ROWs (e.g., utility, transportation) in the NCA.</p> <p>New ROWs will be granted in Exclusion areas only when required by law or federal court action.</p>	<p>Designate ROW Avoidance and Exclusion areas, including Designated Corridors, as follows (Map 2-45):</p> <p>Avoidance area: 0 acres</p> <p>Exclusion area: 44,808 acres</p> <p>Designated ROW Corridor: 50 acres (State Route 18)</p> <p>Do not designate new corridors for linear ROWs (e.g., utility, transportation) in the NCA.</p> <p>New ROWs will be granted in Exclusion areas only when required by law or federal court action.</p>	<p>Designate ROW Avoidance and Exclusion areas, including Designated Corridors, as follows (Map 2-46):</p> <p>Avoidance area: 0 acres</p> <p>Exclusion area: 38,324 acres</p> <p>Designated ROW Corridors: 6,534 acres</p> <p>New ROWs will be granted in Exclusion areas only when required by law or federal court action.</p>